

Human Trafficking

The
Issue

Our
Team

Our
Task

Policy
and
Algorithm

Documentation

Next
Steps



Human Trafficking Committee Members

Caroline Bocklage, CTA-C (Medical Specialties)

Tracy Bocklage, RN (Labor and Delivery)

Lesli Briggs, RN SLS (UH Emergency Services)

Amy Hoff, RN SLS (WCH Emergency Services)

Heather Jones, RN SLCE (Center for Education)

Amy Nelson, RN (Maternal Newborn)

Harly Blumhagen, LMSW CM (WCH Social Work)

Human Trafficking

The
Issue

Our
Team

Our
Task

Policy
and
Algorithm

Documentation

Next
Steps



Video: "Trafficked"

The Issue

<https://vimeo.com/126198444>

The Issue

What it is

Scope of
the
problem

Why we
care

What it is

Human trafficking is a form of modern day slavery and occurs when vulnerable people are exploited for sex work or physical labor through force, fraud, or coercion²

Sex Trafficking

Labor
Trafficking

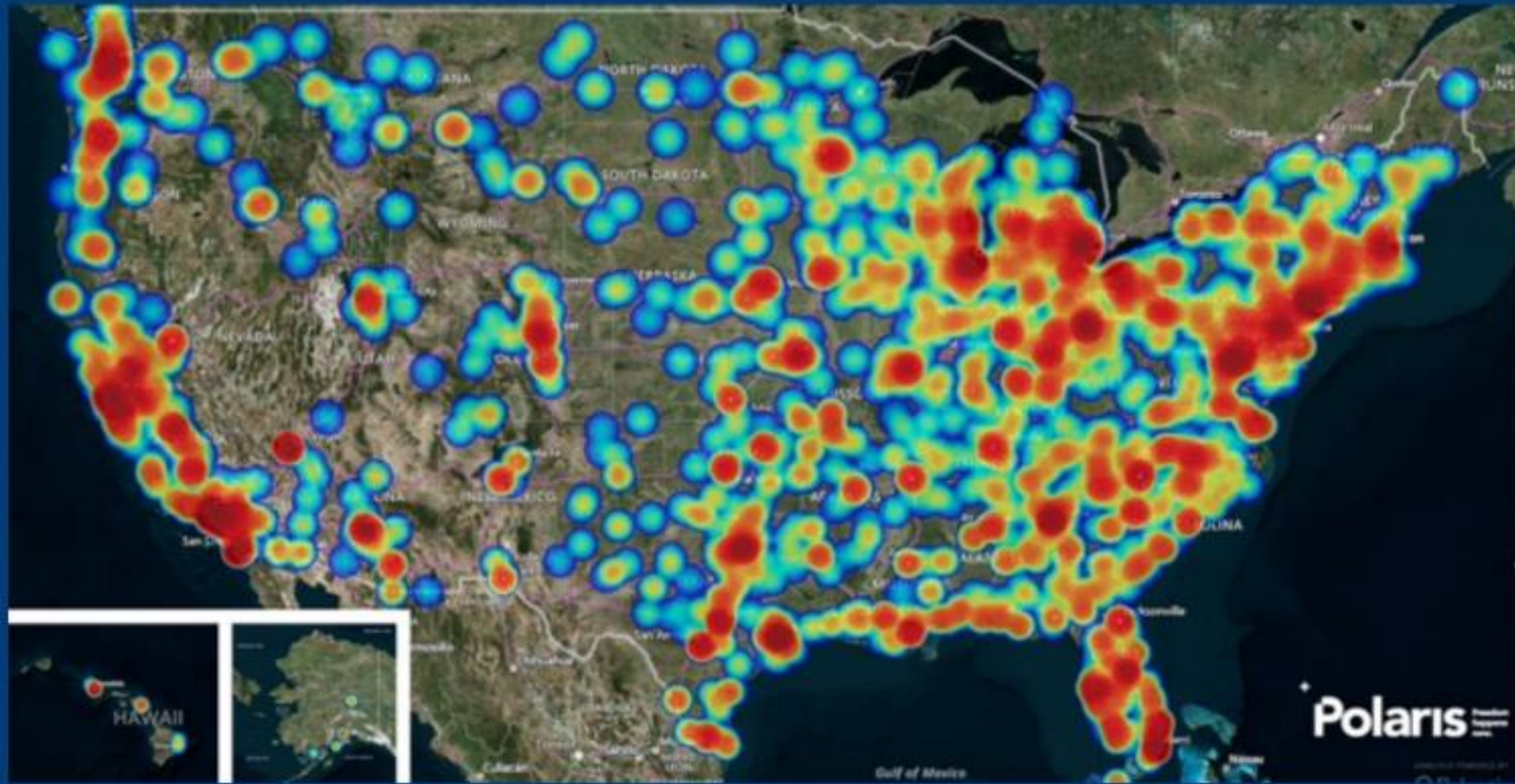
Human Trafficking Worldwide

**An estimated 40.3 million
people are enslaved
worldwide⁵**

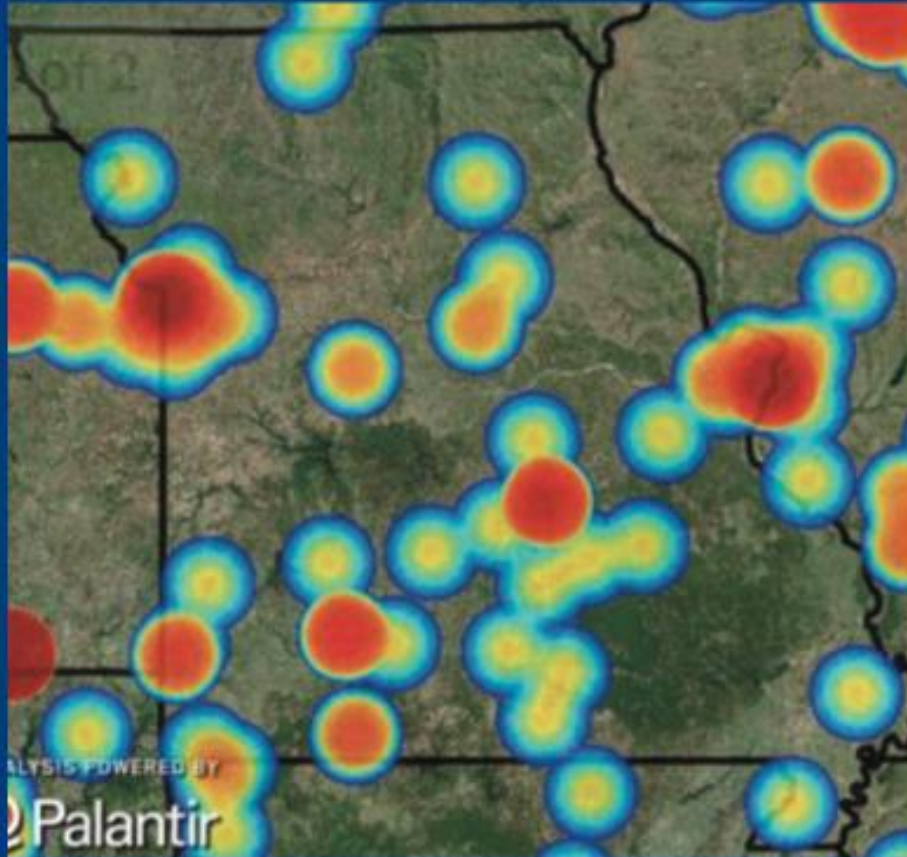
USA

Missouri

Human Trafficking in the U.S.



Human Trafficking in Missouri



- Columbia is a human trafficking hotspot because of its proximity to I-70 and Highway 63
- There were 140 reported cases in 2017⁷
- Most of Missouri's cases represent sex trafficking (78%). The majority are female (81%) and almost one third of victims are minors (29%)⁷

Human Trafficking in Boone County



Recent arrests bring a north Columbia brothel into the light, raise questions about sex trafficking

BRITTANY CROCKER AND MARISA ANZ May 1, 2017 (0) 15 min to read

Columbia mom charged with sex trafficking disabled daughter

Why we care

"88% of sex trafficking survivors reported having contact with a healthcare provider while being trafficked"⁶

The lives of victims who are trafficked are characterized by brutality, destruction of self-esteem, and controlled by violence and threats of violence to family members

**MU
Health
Care**

Human Trafficking and MU Health Care

- MU Health Care is currently treating victims of trafficking.
- Erika's Story
- "There is no age, sex, race, sexual orientation, or socioeconomic level that is spared from human trafficking." ¹⁴
- MU Health Care can better serve this vulnerable population by assessing patients for human trafficking.

Next
Steps

Human Trafficking

The
Issue

Documentation

Policy
and
Algorithm

Our
Team

Our
Task



Our Task

As healthcare workers, we must provide a safe environment and trauma-informed care that addresses both their physical and psychological needs

Identifying
a Victim

The
Interview

Resources

Safety

Identifying a Victim

Recognizing the Signs of a Victim

Characteristics of the Controller

Recognizing the Signs of a Victim

The Patient...

- Is accompanied by a person that seems controlling
- Is fearful, scared, depressed, anxious, submissive, tense or paranoid
- Avoids eye contact
- Has few or no personal possessions
- Appears shy or fearful around uniformed security
- Is not able to speak for themselves (third party may insist on being present or translating) or patient defers to visitor
- Delay in obtaining care

The Patient...

- Has no formal identification
- Has no money or is not in control of his/her money
- States he/she is "just visiting" or does not know his/her address
- Lives with his/her employer
- Does not know what city he/she is in
- Inconsistencies in story
- Presence of tattoos i.e. branding of controller

Physical Signs

- Appears malnourished
- Shows signs of physical and/or sexual abuse, torture or confinement such as handcuffs or rope burns around wrists and ankles
- Evidence of self-mutilation
- Bite or burn marks, cuts and bruises
- Vaginal and/or rectal damage
- Pregnancy, especially in minors
- Sexually Transmitted Infections/HIV

Physical Signs

- Bald spots, especially in women
- Urinary Tract Infections
- Missing teeth, dental damage or decay
- Broken bones
- Drug use/abuse
- Bruises in various stages of healing
- Botched medical procedures by nonprofessionals

Characteristics of the Controller

The Controller...

- Speaks for the victim
- Does not want to be separated under reasonable circumstances from the patient
- Appears shy or fearful around uniformed security or law enforcement
- May be older than the victim
- Refers to himself/herself as a "family member"
- Does not want language services involved - wants to translate for the patient

The Interview

- Healthcare workers may be the first contact a victim has as a possible way out of captivity
- Our job is to create a safe environment and build trust so victims feel comfortable sharing
- It is important to "listen dangerously" ... do not appear shocked or repelled by what they share
- Disclosure is **not** the goal of an interview

Tips

Helpful
Language

How to
Interview

Challenges

Tips for Interviewing

- Build trust
- Gain permission to interview patient
- Limit interruptions
- Take time with the patient, avoid rushing
- Utilize trauma informed interviewing techniques⁸
 - Have an unbiased and non-judgmental attitude
 - Be kind and respectful without being overly sympathetic
 - Be careful to not say things that reinforce shame and embarrassment
- Involve language services if appropriate

Helpful Language

- "We are here to help you"
- "Your safety is our first priority"
- "We will give you the care you need"
- "We can try to help you find you a safe place to stay"
- "No one should be treated like this"

How to Interview

- Do not perform interview in the presence of the controller
- Patient may advocate for the controller to stay
- Wait for a private moment with the patient
- Remove patient for a "procedure" if necessary

Interview Questions

- Is anyone threatening you if you leave?
- Is anyone holding your passport or ID?
- Is anyone taking the money you earn?
- Do you owe a debt you cannot pay off?
- Is anyone physically hurting you?
- Is anyone sexually abusing you?
- Are you forced to do sex acts for money?

Challenges

- Memory loss due to trauma
- Unable to self-identify as a victim
- Anxiety and fear
- Substance abuse
- History of physical, emotional, and psychological abuse

Offering Resources

- One of the most difficult aspects of working with victims of human trafficking is their resistance to rescue
- Unless they are ready to take action they are likely to resist/refuse assistance
- Risk of retaliation from the controller is strong
- Respect the patient's decision
- The decision to leave may come later from something you said or did

Offering Resources

- National Human Trafficking Hotline: 1-888-373-7888
- Text HELP 2333733 (BeFree)
- Central Missouri Stop Human Trafficking Coalition (CMSHTC) 866-590-5959

Reporting

- If a patient desires to proceed with reporting to law enforcement:
 1. Continue to assess for potential safety concerns.
 2. Notify security
 - a. Security will facilitate notifying law enforcement
 3. Notify house manager
 4. Inform social work/case management of the situation
 5. Consider making the patient confidential
 6. Initiate standard procedures for the collection and preservation of evidence when appropriate.
- Patient consent required in order to notify law enforcement

Safety

- Human trafficking is a \$150 billion criminal industry worldwide¹²
- These victims represent an economic commodity for the trafficker
- Care must be taken to ensure staff and patient safety

Next
Steps

Human Trafficking

The
Issue

Documentation

Policy
and
Algorithm

Our
Team

Our
Task





UMHC Adult Human Trafficking Policy and Algorithm

Policy

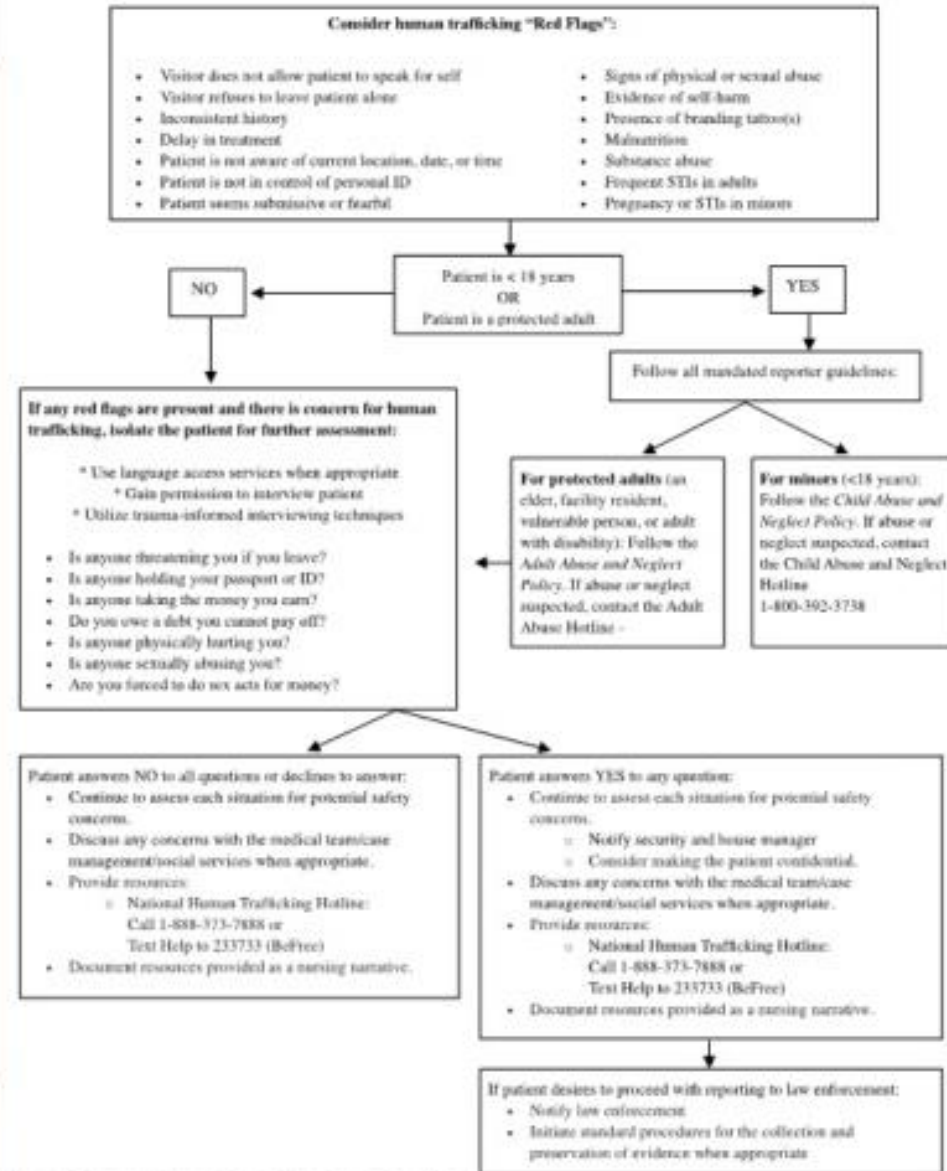
Algorithm

House Bill
NO. 1246

UMHC Adult Human Trafficking Policy

1. To establish a standard process for assessing patients for human trafficking.
2. To identify potential victims of human trafficking based on assessment indicators and trauma-informed interviewing.
3. To provide health care services, safety, support, and appropriate resources to potential and identified victims of trafficking, while following all mandated reporter guidelines.

MU Health Care Human Trafficking Algorithm



*See *Adult Human Trafficking - Policy* in Naves for more information

House Bill NO. 1246

"Beginning **March 1, 2019**, the human trafficking hotline poster designed by the department of public safety shall be displayed in a conspicuous place in or near the bathrooms or near the entrance of each of the following establishments..."

1. Emergency rooms within general acute care hospitals
2. Urgent care centers
3. Women's health centers

Next
Steps

Human Trafficking

The
Issue

Documentation

Policy
and
Algorithm

Our
Team

Our
Task



The goal is for all MU Health Care patients to be assessed for human trafficking

Areas for Documentation

I-View Band
Adult Med Surg Assessment
Adult Neuro-Psych
MUPC Frequent Assessment
OB Physical Assessment
Adult General Medicine ED
Pregnancy ED
Psych Suicide Substance Abuse ED
ED Class 1 Medical
ED Code Stroke
ED Trauma Alert

Form
Nursing Admission History Adult
Nursing Assessment Form AU
Nursing Admission History OB
OB Triage Assessment

Adult Med Surg Assessment (BAND)
Vital Signs
Pain/Sedation
Neuro Assessment
CAM Med/Surg Pt \geq 65 YR
Psych/Spiritual
Abuse Assessment (Section)
CV
Pacemaker
PIV:
Pulmonary Assessment I
GI

Abuse Assessment (Section)

Human Trafficking Indicators (DTA)

Human Trafficking Indicators (DTA)

- | | |
|--------------------------|---|
| <input type="checkbox"/> | None (nomenclature) |
| <input type="checkbox"/> | Visitor does not allow pt to speak for self |
| <input type="checkbox"/> | Visitor refuses to leave pt alone |
| <input type="checkbox"/> | Inconsistent history |
| <input type="checkbox"/> | Delay in treatment |
| <input type="checkbox"/> | Not aware of current location, date or time |
| <input type="checkbox"/> | Not in control of personal ID |
| <input type="checkbox"/> | Seems submissive or fearful |
| <input type="checkbox"/> | Signs of physical abuse |
| <input type="checkbox"/> | Signs of sexual abuse |
| <input type="checkbox"/> | Evidence of self-harm |
| <input type="checkbox"/> | Presence of branding tattoo(s) |
| <input type="checkbox"/> | Malnutrition |
| <input type="checkbox"/> | Substance abuse |
| <input type="checkbox"/> | Frequent STIs in adults |
| <input type="checkbox"/> | Pregnancy or STIs in minors |
| <input type="checkbox"/> | Other (free text option) |

Human Trafficking Further Assessment	
	No concern for human trafficking
	Able to assess - pt alone
	Unable to assess - pt not alone
	Unable to assess - pt condition

Human Trafficking Further Assessment

No concern for human trafficking

Able to assess - pt alone

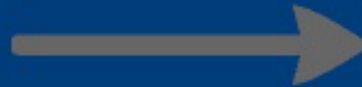
Unable to assess - pt not alone

Unable to assess - pt condition

DOCUMENTATION
COMPLETE

Human Trafficking Further Assessment

	No concern for human trafficking
	Able to assess - pt alone
	Unable to assess - pt not alone
	Unable to assess - pt condition



TASK FIRES FOR NURSING
TO COMPLETE LATER

Human Trafficking Further Assessment	
	No concern for human trafficking
	Able to assess - pt alone
	Unable to assess - pt not alone
	Unable to assess - pt condition



NURSING
TO COMPLETE
FURTHER ASSESSMENT

Is anyone threatening you if you leave?

Is anyone holding your passport or ID?

Is anyone taking the money you earn?

Do you owe a debt you cannot pay off?

Is anyone physically hurting you?

Is anyone sexually abusing you?

Are you forced to do sex acts for money?



NURSING TO
FOLLOW ALGORITHM

Human Trafficking

The
Issue

Our
Team

Our
Task

Policy
and
Algorithm

Documentation

Next
Steps

Next Steps

Learn
More

Community
Involvement

Victim
Advocacy

PASS IT
ON...

Learn More

- Visit Polarisproject.org

Community Involvement

- Attend a Central Missouri Stop Human Trafficking Coalition meeting
- Volunteer at True North/Safe Passage
- Volunteer at Rainbow House
- Amazon SMILE

Victim Advocacy

- We hope to establish a victim advocacy team that is called to support patients at the bedside when a victim is identified

PASS IT ON...

References

1. Chesnay, M. (2013). Sex Trafficking, a clinical guide for nurses. New York: New York
2. Donahue, S., Schwien, M., LaVallee, D. (2018). Educating emergency department staff on the identification and treatment of human trafficking victims. Emergency Nurses Association. Retrieved from: <http://doi.org/10.1016/j.jen.2018.03.021>
3. Groot, (2013). Sex Trafficking, a clinical guide for nurses. New York: New York.
4. Health, Education, Advocacy, Linkage (HEAL). (2017). HEAL trafficking and Hope for Justice's protocol toolkit for developing a response to victims of human trafficking in health care settings. Retrieved from: <https://healtrafficking.org/2017/06/new-heal-trafficking-and-hope-for-justices-protocol-toolkit-for-developing-a-response-to-victims-of-human-trafficking-in-health-care-settings/>
5. International Labour Organization (IOL). (2016). Forced labour, modern slavery and human trafficking. Retrieved from: <https://www.ilo.org/global/topics/forced-labour/lang--en/index.htm>
6. Lederer L., Wetzel, C. (2014). The health consequences of sex trafficking and their implications for identifying victims in healthcare facilities. Annals of Health Law. 23(1):61-91. Retrieved from: http://www.annalsofhealthlaw.com/annalsofhealthlaw/vol_23_issue_1?pg=94#pg94
7. National Human Trafficking Hotline (NHTH). (2017). Missouri. Retrieved from: <https://humantraffickinghotline.org/state/missouri>

References

8. National Human Trafficking Hotline (NHTH). (2015). Trauma-informed human trafficking screenings. Retrieved from: <https://humantraffickinghotline.org/resources/trauma-informed-human-trafficking-screenings>
9. National Human Trafficking Training and Technical Assistance Center. (2018). Adult human trafficking screening tool and guide. Retrieved from: https://www.acf.hhs.gov/sites/default/files/otip/adult_human_trafficking_screening_tool_and_guide.pdf
10. Polaris (2017). Sex Trafficking. Retrieved from: <https://polarisproject.org/human-trafficking/sex-trafficking>
11. Polaris Project (2017). 2017 Statistics from the national human trafficking hotline and BeFree textline. Retrieved from: <http://polarisproject.org/sites/default/files/2017NHTHStats%20%281%29.pdf>
12. Polaris Project (2018). On-Ramps, Intersections, and Exit Routes: A Roadmap for Systems and Industries to Prevent and Disrupt Human Trafficking. Retrieved from: <https://polarisproject.org/sites/default/files/A%20Roadmap%20for%20Systems%20and%20Industries%20to%20Prevent%20and%20Disrupt%20Human%20Trafficking.pdf>
13. Rodriguez, A. (2009). Labor trafficking. Florida: Bonita Springs
14. Shandro, J., Chisolm-Straker, M., Duber, H., Findlay, S., Munoz, J., Schmitz, G., Stanzer, M., Stoklosa, H., Wiener, D., & Wingkun, N. (2016). Human trafficking: a guide to identification and approach for the emergency physician. *Annals of Emergency Medicine*, 68, (4), 501-508. doi:10.1016/j.annemergmed.2016.03.049

Human Trafficking

The
Issue

Documentation

Policy
and
Algorithm

Our
Team

Our
Task

